
FAREHAM LIVE TECHNICAL SPECIFICATIONS

TECHNICAL SPECIFICATION 2024



FAREHAM LIVE

OSBORNE ROAD
FAREHAM
PO16 7DB

TRAFALGAR
THEATRES

CONTENTS PAGE

1	Welcome
2	Contact Details
3	Health and Safety
4	Safeguarding
5	Visitors
6	Access and Parking
7	Main auditorium
8	Assisted Listening
9	Dressing Rooms
10	Wardrobe
11	Welfare facilities
12	Stage
13	Orchestra Pit
14	Lighting
15	Sound
16	Studio One

1 WELCOME

We eagerly anticipate your arrival at Fareham Live and trust that this Technical Specification Pack will furnish you with all the requisite details for your tenure at our esteemed venue.

Our friendly and professional teams possess a wealth of experience and knowledge and eagerly look forward to collaborating with you to ensure your event or production is a triumphant success.

To facilitate our preparations for your visit and ensure seamless operations, we **kindly** request that you furnish us with the following information at your earliest convenience or, at the very least, six weeks prior to your visit:

- 1 Current Risk Assessments for the production, encompassing method statements for the construction of any set and its utilisation during performances.
- 2 A schedule detailing the timings and crew requirements for anticipated calls and working sessions.
- 3 Vehicle packing diagrams, inclusive of estimated weights.
- 4 Ground plans with flying plots, incorporating weights.
- 5 Venue-specific lighting plans.

This handbook incorporates a list of our in-house stage, lighting, and sound equipment inventory. Should you require additional equipment, please do not hesitate to discuss your needs with us; we can make the necessary arrangements and provide billing through the contra. Be advised that, due to our busy schedule of productions, there may be instances when in-house equipment is unavailable or may be substituted with suitable alternatives. Rest assured; any such alterations will be communicated with you to ensure the success of your production.

Any electrical appliances brought into the venue must be accompanied by a valid PAT certificate. Failure to adhere to this requirement may result in the denial of entry for these items.

Kindly ensure that this handbook is accessible to your technical staff and is referenced when completing the Event Deal Memo.

2 CONTACT DETAILS

Venue Address

Fareham Live
Osborne Road
Fareham
PO16 7DB

Telephone Numbers

Stage Door: TBC

Venue Director

Gavin Shuman

gshuman@trafalgartheatres.com

Buildings and Technical Manager

Paul Wyse

pwyse@trafalgartheatres.com

General Manager

Carmen Strydom

cstrydom@trafalgartheatres.com

Venue Administrator

Emily Meldrum

emeldrum@trafalgartheatres.com

Guest Experience Manager

Kirsten Peach

kpeach@trafalgartheatres.com

Food and Beverage Manager

TBC

Events Manager

Robyn Hayes

rhayes@trafalgartheatres.com

3 HEALTH AND SAFETY

Onstage Briefing and Set Induction

Any show should include a preliminary briefing for all venue and touring staff at the start of the load-in. This practice is in accordance with CDM 2015 Regulations. Furthermore, any set which poses difficulties for backstage access and safe movement in show conditions will require a set induction or briefing session for the show crew prior to the first dress rehearsal.

Length of shift/overnight breaks

Please note that in accordance with the Working Time Regulations 1998, an 11-hour break between working shifts must be scheduled for all members of staff. Split shifts can be scheduled so the production finishes late onstage and begins early the next day, but the 11-hour break should not be infringed for any individual member of staff. Suitable meal breaks must also be scheduled for the welfare of all staff who should not work more than 6 hours without an appropriate break. All schedules must be agreed in advance.

Noise levels

Please note that in accordance with the Noise at Work Regulations 1989, the Control of Noise at Work Regulations 2005, and for the benefit and care of all staff and members of the public, Fareham Live reserves the right to monitor and limit the sound levels for any given performance if necessary.

4 SAFEGUARDING

The Company (Trafalgar Theatres) recognises that live theatre and the entertainment industries can have a very powerful and positive influence on anyone who comes into contact with them. Not only does a performing arts environment provide opportunities for enjoyment and achievement, but it also helps to develop valuable qualities such as self-esteem, leadership and teamwork. Most Vulnerable Persons participate happily and safely in arts activities.

The Company recognises that it has a duty of care to safeguard all Vulnerable Persons with whom Company Personnel come into contact in the course of Company business. The Company interprets its safeguarding responsibilities as taking all reasonable measures to ensure that the risks of harm to Vulnerable Persons using Company premises or engaged in Company activities are minimised. In accordance with relevant safeguarding legislation, government guidance and good practice, the Company will adopt and implement appropriate and reasonable safeguards to promote and protect the safety and welfare of Vulnerable Persons using its premises or engaged in activities for which it is responsible. The purpose of this Policy is to establish and set out clear lines of responsibility, communication and action in respect of any concern relating to the welfare of a Vulnerable Person who is working with, or engaging with, Company Personnel and / or using or visiting Company premises or visiting other premises as part of an activity or event for which the Company is responsible.

For our full Safeguarding policy please contact the Venue Director.

5 VISITORS

In the interest of security, all visitors should report to the stage door which is located next to the dock at the rear of the venue. Please inform the stage door supervisor if you are expecting any additional guests, and they will inform your venue contact on your arrival.

6 ACCESS AND PARKING

At Fareham Live we have a loading dock at the rear of the venue, and its exact location is below via What 3 Words.

What 3 Words Location: ///multiples.replied.stolen

The dock area can house one truck at a time, and a trailer can be left with permission from the buildings and technical manager. All vehicles that arrive at the dock must be seen into position by a member of the resident technical staff.

The venue entrance to the stage is via a roller shutter and a set of onstage dock doors. Note the measurements below to ensure you have safe access to the stage.

Dock platform height: 950mm
Dock to roller shutter height: 3634mm
Dock roller shutter width: 3534mm

Internal dock door height: 4000mm
Internal dock door width: 3630mm

Distance from vehicle to stage: 5000mm

There is ample paid parking at the venue for cars and small vehicles, and it is free after 6 pm.

Please note: the nearest truck park is located at 2200 Talbot Road, Fareham PO15 5RY

<https://www.truckfly.com/en/poi-details/industrial-estate-parking/77152/>

7 MAIN AUDITORIUM

The Auditorium has various capacities depending on your event or performance.

Fully Seated Capacity: 800 Seats
Standing Capacity: 971 which includes 732 stranding and 239 seated.

The auditorium has eight wheelchair spaces which will change the seated capacity depending on the demand and fixed seating is replaced with individual seats.

Auditorium mix position

There is an ability to add a mix position which is at the rear of the auditorium and located within rows Y, Z and ZZ. The maximum size of this position has a working area of 3000mm wide and 2500mm deep.

8 ASSISTED LISTENING

Within the main hall, we operate a Wi-Fi based assisted listening system which we will ask that a show feed is sent to. Information regarding this can be discussed with the Buildings and Technical Manager.

Please note that the Wi-Fi assisted listening system doesn't reduce band width for other devices.

9 DRESSING ROOMS

Fareham Live has four main dressing rooms with the addition of two chorus rooms. We also have a green room which can be an additional dressing room.

Dressing Room 1:	2 persons with desk spaces, mirrors, and paging.
Dressing Room 2:	2 persons with desk spaces, mirrors, and paging.
Dressing Room 3:	2 persons with desk spaces, mirrors, and paging.
Dressing Room 4:	2 persons with desk spaces, mirrors, and paging.
Green Room:	7 persons with desk spaces, mirrors, and paging
Chorus Room 1:	6 persons with desk spaces, mirrors, and paging
Chorus Room 2:	Wardrobe/Company office

Please get in touch with us with any questions regarding your dressing room requirements.

10 WARDROBE

Fareham Live adopts a flexible wardrobe and laundry space but this facility is primarily located within chorus room two.

- 1 x 10kg Washing Machine
- 1 x 10kg Condenser Dryer
- 1 x Iron
- 1 x Ironing Board
- 4 x Clothing Rails

11 WELFARE FACILITIES

On the ground floor there is an accessible toilet and shower facility adjacent to the stage door area.

Along the first-floor dressing room corridor there is a shared toilet and shower which are available for the four dressing rooms and green room. Additionally, each chorus rooms also have an ensuite shower and toilet.

12 STAGE

Fareham Live's main stage is an adaptable space that can cater for both theatre productions as well as events and live music and is supported by a level load in from the dock area and onto stage.

The stage has an upstage crossover which is behind a fixed wall, as well as hosting an upstage crossover at fly floor level.

Dimensions

Bare Stage Playable Area:	Width 15000mm Depth 8200mm
Stage Construction:	Black 15mm MDF
Stage Height from floor:	1100mm
Stage load rating:	7.5KN/m ²
Stage Right Wing:	Width 2400mm Depth 7500mm
Stage Left Wing:	Width 2000mm Depth 7500mm
Proscenium Width:	12000mm
Proscenium Height:	6000mm Fixed Height

Please Note: We use a house border or tabs to reduce the height of the proscenium height as required.

Stage to grid:	14150mm
Stage to underside of fly floor:	14095mm
Distance between fly floors:	14500mm

Flying

There is a single purchase counterweight flying system and it is operated from the fly floor on stage right.

29 counterweight sets rigged on single 48mm barrels.

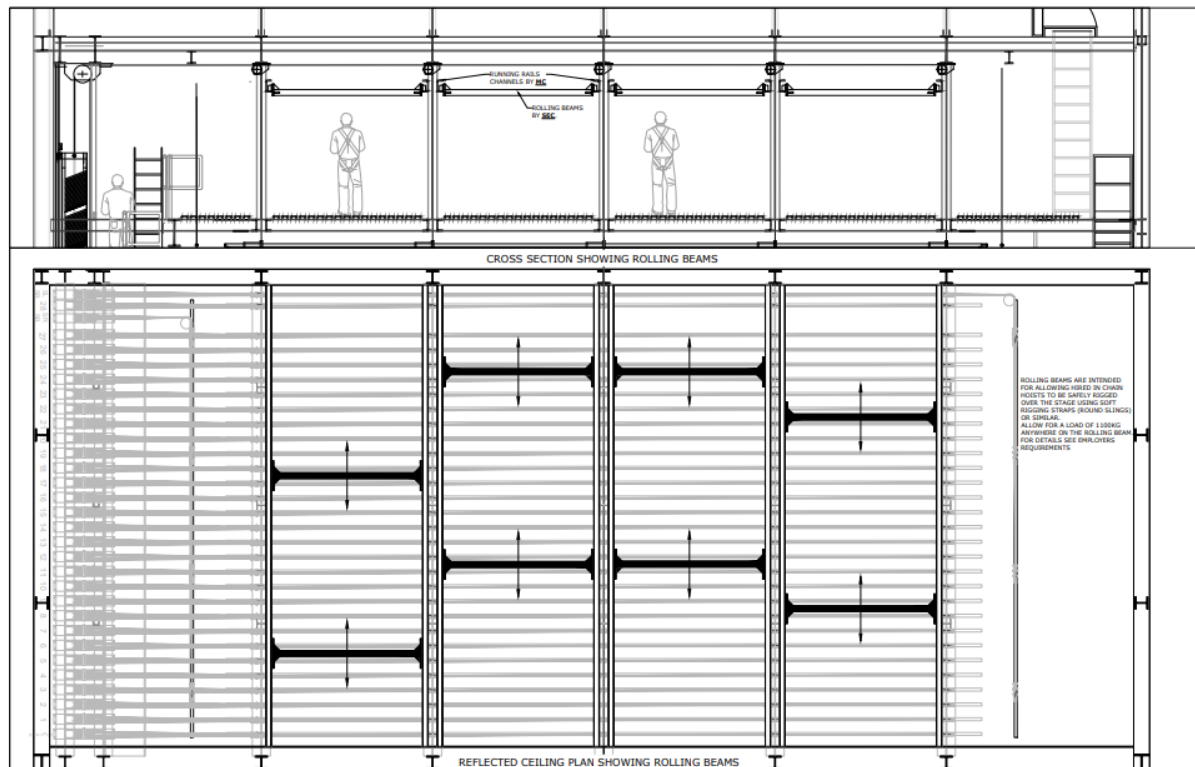
Length of counterweight bar:	12800mm
Bar Extensions:	Yes, maximum length of bar 14416mm
Maximum out dead:	13900mm
Maximum Bar load:	400kg UDL

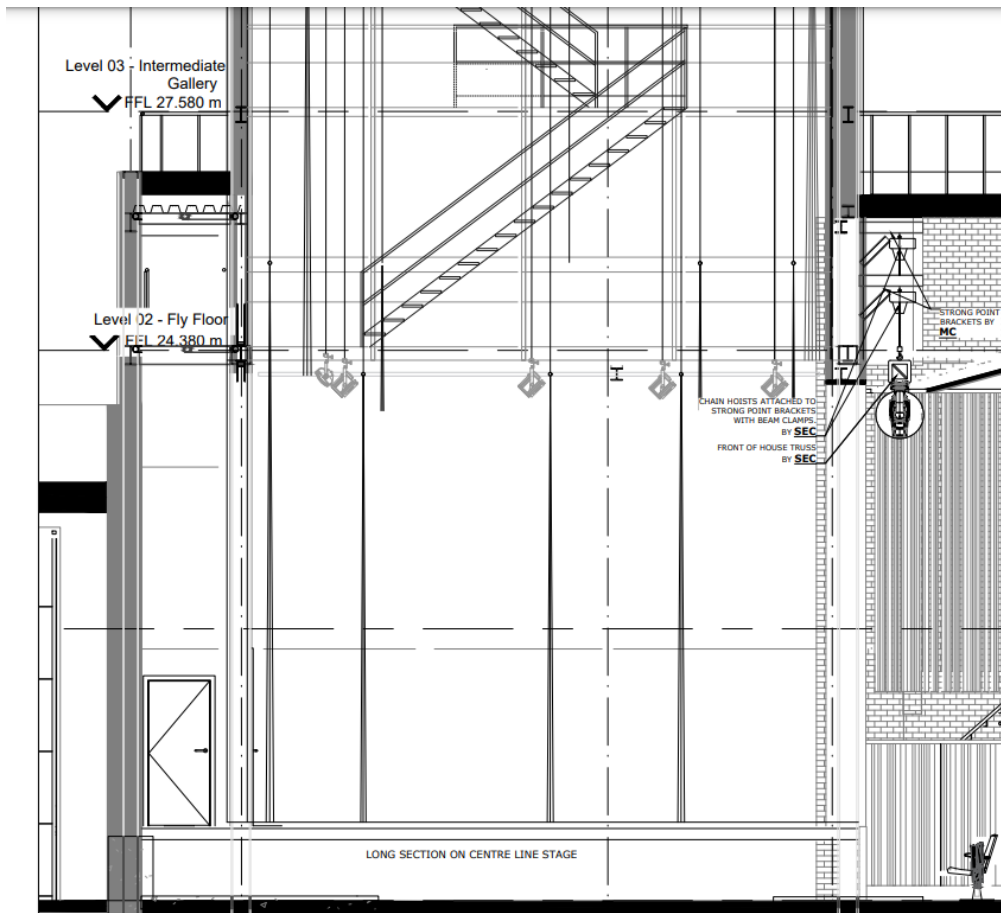
Additionally, we have an Up/Down bar each side of stage which are 7500mm long.

Rigging

Within the grid space there is a total of 8 rolling beams, all of which have a safe working load of 1100kg and are available for production loads. Front of house there is an advanced truss position which consists of 3x1000kg SWL chain hoists and a 13000mm long 300mm x 300mm black box truss.

Grid and Advanced Truss plans





Please note that all overhead rigging must be done so in accordance with our rigging code of practice and policy. A member of the Fareham Live technical team must work with you within the grid and bridge areas to ensure your safety and the compliance with the code of practice and policy. Do get in contact with the Buildings and Technical manager to discuss your rigging requirements.

Stage drapes and masking

Our masking is listed below, we are using a border to act as a house header, or a set of house tabs which is located on counterweight bar one, and a set of house legs is on counterweight bar two.

5 x Black Borders:	13000mm x 3000mm
5 x Sets of Legs:	3000mm x 7000mm
1 x Full Black:	13000mm x 7000mm
1 x Split Black:	2 off 7000mm x 7000mm
1 x Cyclorama:	13000mm x 7000mm

Additionally, we have 3 sets of legs which act as wing masking and as standard are rigged on the Up/Down bars.

Stage equipment

On stage there is a variety of equipment to assist the performance or event.

30 x Stage Weights

8 x 2m extendable stage brace

10 x Tank Traps

10 x 2000mm black aluminium scaffold tube

12 x Steeldeck sections 1828mm (6ft) x 1220mm (4ft)

Various steel deck legs and end caps.

Please note we hold a variety of stage rigging equipment, do contact the Buildings and Technical Manager to discuss your requirements.

Access equipment

1 x Tallescope with rescue kit. Maximum working height is 7900mm

2 x 12 Rung Zarges. Maximum working height is 6090mm free standing.

2 x 6 step fiberglass ladder. Maximum open height is 1790mm

2 x 4 step fiberglass ladder. Maximum open height is 1120mm

13 ORCHESTRA PIT

At Fareham Live, there is no orchestra pit. However, seats can be removed to facilitate one depending on the size of the orchestra or band. We can facilitate an alternative position for a remote orchestra or band, but these adjustments must be requested during the booking stage.

Please consult the buildings and technical manager with any requirements that look to use an orchestra pit setup.

14 LIGHTING

Fareham Live caters for multiple lighting positions front of house and is equipped with Internally Wired Bars (IWB) for the stage area. The lighting rigging locations are listed below.

Advanced Truss:	12 x 16a Outlets, DMX and Data (550mm from the Settling Line)
Proscenium Booms:	6 x 16a Outlets, DMX and Data
Horizontal Booms:	6 x 16a Outlets, DMX and Data
Vertical Booms:	6 x 16a Outlets, DMX and Data
FOH Bridge 1:	12 x 16a Outlets, DMX and Data (4575mm from the Settling Line)
FOH Bridge 2:	12 x 16a Outlets, DMX and Data (9550mm from the Setting Line)
FOH Bridge 3:	12 x 16a Outlets, DMX and Data (15720mm from the Settling Line)

Please note that the stage left fly floor is used for all lighting and sound patching requirements.

Control

Control for the lighting is normally situated within the control room. This can be placed into the auditorium mix position but be aware this will affect your seating capacity.

A production desk position can be positioned within rows G and H, **but this would not be used for performance.**

ETC Gio @5 4096 channel with an additional 40 x Fader Wing
Apple iPad iRFR Focus Remote
252 x ETC Coloursource ThruPower Dimmers

Power Supplies

Our heavy main power is split between locations and follows the below plan.

Sound Power

Downstage left: 1 x 63a Three Phase Cee Form
2 x 32a Single Phase Cee Form
1 x 16a Single Phase Cee Form

Dock Stage Right: 1 x 63a Three Phase Cee Form
2 x 32a Single Phase Cee Form
1 x 16a Single Phase Cee Form

General Power

Upstage Left: 1 x Powerlock Three Phase
1 x 125a Three Phase Cee Form
2 x 63a Three Phase Cee Form
2 x 32a Three Phase Cee Form

Dock Stage Right: 1 x Powerlock Three Phase
1 x 125a Three Phase Cee Form
2 x 63a Three Phase Cee Form
2 x 32a Three Phase Cee Form

Fixtures

Fresnel: 14 x Elation KL6 Full Colour LED Fresnel
4 x Elation KL8 Full Colour LED Fresnel

Profile: 8 x ETC Source 4 Zoom 25/50
24 x ETC Source 4 Zoom 15/30

Followspots: 2 x Robe Robospot systems using Robe Esprite FS moving heads. These are located on Bridge 3.

Par: 20 x ETC Coloursource Par

Effects: 1 x Unique 2.1 Hazer
1 x Le Maitre Mini Mist
4 x Pro Lights Diamond 19 LED Wash
6 x Pro Lights Moonstone LED Profile
2 x Chroma Q ColourForce 72 Batten

15 SOUND

Within the main hall we have a KV2 Audio point source PA system that consists of the follow equipment

Front of Stage

2 x KV2 ES2.6 Subs

4 x KV2 ESD6 Full range speakers as front fills

Proscenium Boom

2 x KV2 ESR215 Mk2 Full range speakers

Advanced Truss

2 x ESD15 Full range speakers

2 x KV2 ES2.6 Subs

Monitors

4 x EM Acoustics MC-15 speakers

Control

The in-house sound console is normally located within the control room. This can be placed within the auditorium mix position but be aware this will affect your seating capacity.

An additional production desk position can be positioned within rows G and H, **but this would not be used for performance.**

1 x Yamaha QL5 Digital Mixing Desk

1 x Yamaha RIO 3224

1 x Apple iPad running Yamaha Stage Mix.

Auditorium mix position

At the rear of the auditorium, within rows Y, Z and ZZ, there is the ability for an audio mix position that has a maximum footprint as listed below.

Width: 3000m (9.8ft)

Depth: 2500m (8.2ft)

The Fareham Live multicore run has been carefully considered to ensure the safest installation. This requires three members to install as it runs up the stage left proscenium wall to the fly floor, across the bridge walkways and down to the control room and finally to the mix position.

Multicore run length: 50m

Communications

Within the main house, there is a wired intercom system and cue lights with multiple positions for use.

Wired Intercom: 10 x Belt packs and headsets

Cue Lights: 16 x Cue lights

Please note that five belt packs are in position permanently and serve the fly floor, lighting, sound and two followspots. Alongside this, three cue lights are in in location for the fly floor, lighting and sound.

SM Desk: This is located downstage left with paging to all dressing rooms and front of house, and camera feeds of the stage.

16 STUDIO ONE

Fareham Live's Studio One is an intimate 120 seat multipurpose space that can present theatre productions, as well as cinema, conference, comedy and live music.

Access

We have the main loading dock at the rear of the building, but this does not serve the studio space. Any equipment and set that needs to be brought into the studio must come through the side door within the space. This means that there is a short walk from your vehicle to the studio access door.

All visitors must come to stage door and sign in and then to meet with your duty technician, this must be done before unloading of your vehicle. The duty technician will be best placed to advise on the location of the vehicle for the unloading.

There is ample paid parking at the venue for car and small vehicles, and it is free after 6pm.

Studio Space

The studio has various capacities depending on your event or performance.

Fully Seated Capacity: 120 Seats

Standing Capacity: 250

Within the retractable seating, there is space for a mix position.

Width: 3000mm

Depth: 1200mm

Dressing Rooms

For the studio space, there is two dedicated dressing rooms and an accessible toilet.

Dressing Room 1: 2 persons with desk spaces, mirrors and paging.

Dressing Room 2: 4 persons with desk spaces, mirrors and paging.

Please get in touch with us with any questions regarding your dressing room requirements.

Wardrobe

Within the studio space there is no facilities for laundry, please do get in contact if you require laundry as we may be able to assist by utilising the main house laundry, but this does depend on other events and productions.

Please note that within dressing room two there will be clothing rails, as well as an iron and ironing board.

Stage

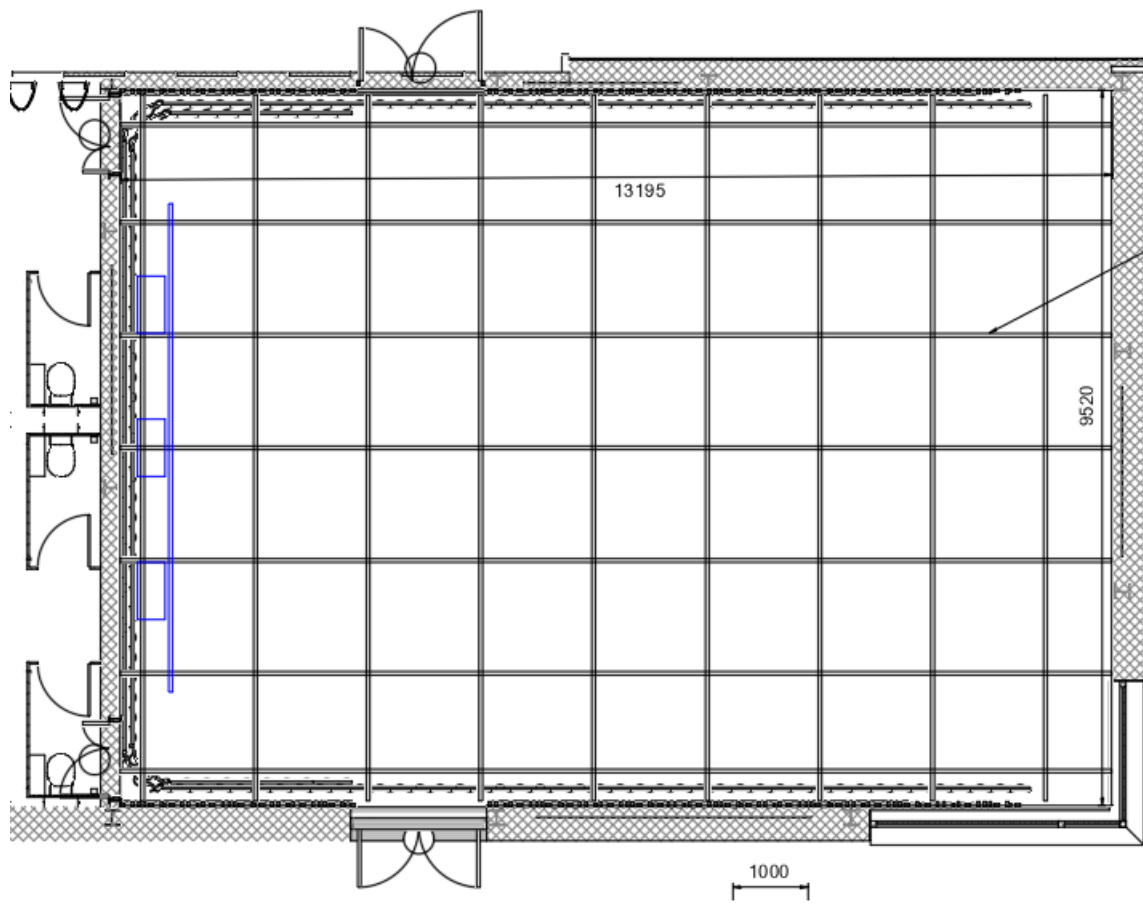
The studio's stage is an adaptable space that can cater for multiple events. The stage is a level load in via a side access door and has a fixed wall cross over between stage left and stage right.

When the seating is out, the stage space is 8500mm wide by 2500mm deep and has a black curtain around the edge.

Please note there are no wings within the studio, as well as no flying facilities.

Lighting

The studio lighting positions are on a fixed lighting grid as shown in the image below.



Across the lighting grid there is a safe working load of 50kg per linear meter and the grid sits at 6100mm above the floor.

Lighting control for the studio is situated at the top of the retractable seating and the equipment is listed below.

ETC EOS Classic 4096 output
36 x ETC Coloursource ThruPower Dimmers

The lantern stock within the studio is to enable versatility within the space and consists of:

Fresnel: 6 x Elation KL6 Full Colour LED Fresnel

Par: 4 x ETC Coloursource Par
8 x Pro Lights Studio Cob

Profile: 8 x ETC Source 4 Junior 25/50 Zoom

Effects: 1 x Unique 2.1 Hazer

Please note that the lighting rig is set within a house rig and so do make contact if you wish to use a specific set up.

Sound

Within the studio, due to the versatility of the space, we have a portable PA system and monitors. Sound control for the studio is also situated at the top of the retractable seating.

Main PA: 2 x EV EKX 12p
2 x EV EKX 18sp

Monitors: 2 x EV PXM 12MP active monitors

Control: 1 x Yamaha LS9 32 Channel with Dante Card
1 x Yamaha RIO 3224

Please note that during a standing event, a mix position can be placed within the space at floor level. This will be set out on steel deck.